

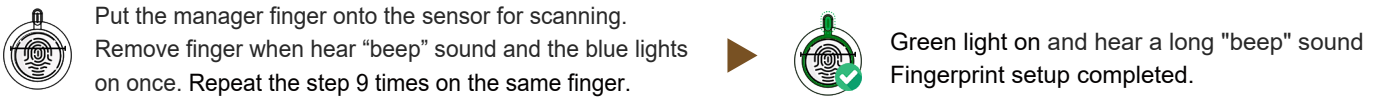
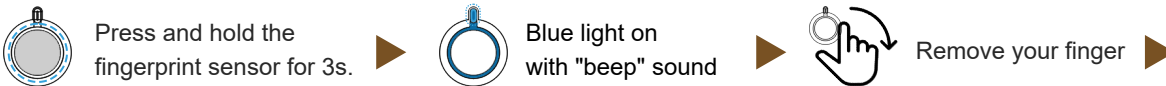
FEATURE

When the padlock stays unlocked, press the lock shackle to locked.

MANAGER :The first and second registered fingerprints are manager fingerprint which can authorize to set up or reset.

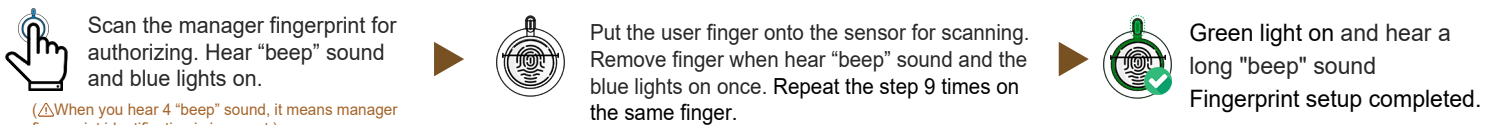
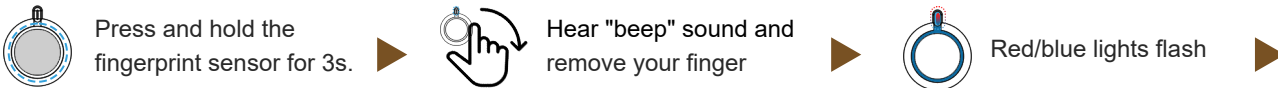
USER :The rest of eight fingerprints are registered by user.

SET UP FIRST MANAGER FINGERPRINT



(△When you see the red light, it means the failure of fingerprint scanning.)

SET UP NEW FINGERPRINT

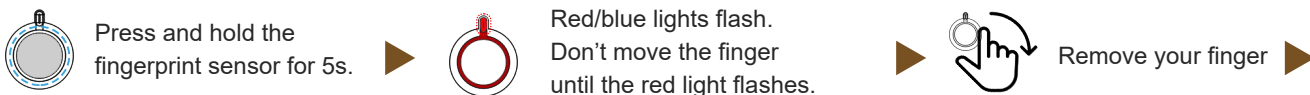


(△When you hear 4 "beep" sound, it means manager fingerprint identification is incorrect.)

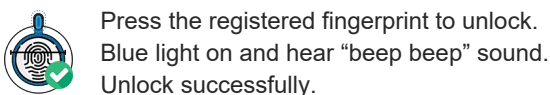
△ Fingerprint full status:

If the fingerprint capacity is full, the system will exit with red light on and 4 "beep" sounds after the manager fingerprint is pressed.

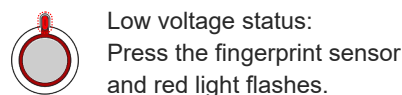
DELETE FINGERPRINT (INITIALIZATION)



UNLOCK



BATTERY CHARGING



Plug in micro USB 5V IN power cord for battery charging until green light off. Battery charging is completed.

NOTE

Any finger can touch to unlock if no fingerprint registered.